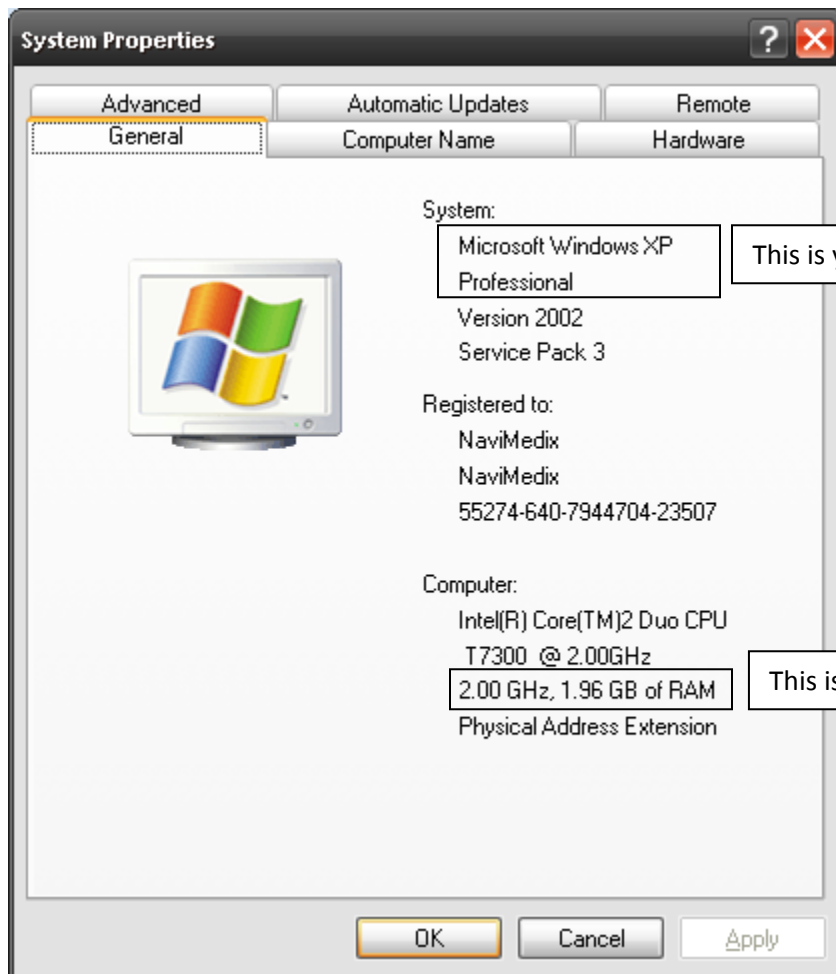


How to Determine your Operating System and Amount of Memory

- On your Windows desktop (the screen that is displayed when Windows has loaded) look for an icon (small image with text) called 'My Computer'
- Using your mouse, right click on the 'My Computer' icon
- Select 'Properties' from this menu with the left mouse button
- After selecting 'Properties' a screen will appear revealing information about the version of Windows that you are using. Please make a note of what version that you are using and click on the 'OK' button to return to your Windows Desktop



This is your Operating System

This is the amount of memory you have